

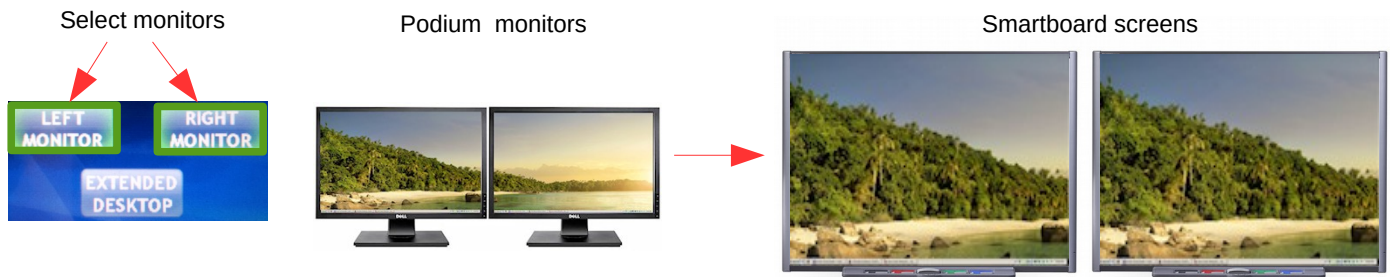
# Working with Multiple Smartboards

Relevant to classrooms at the DSB or 913A

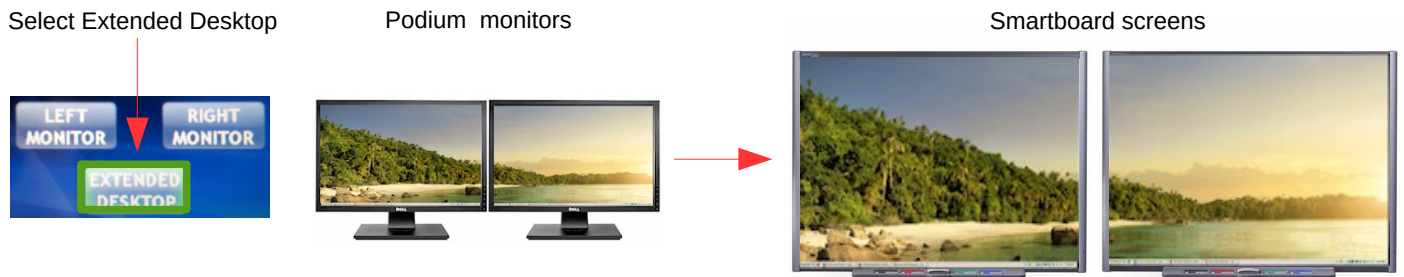
## To Begin

Press the Crestron display on the Podium to activate it and then select PC. The displays on the Podium monitor will remain constant.

*For Mirrored screens:*

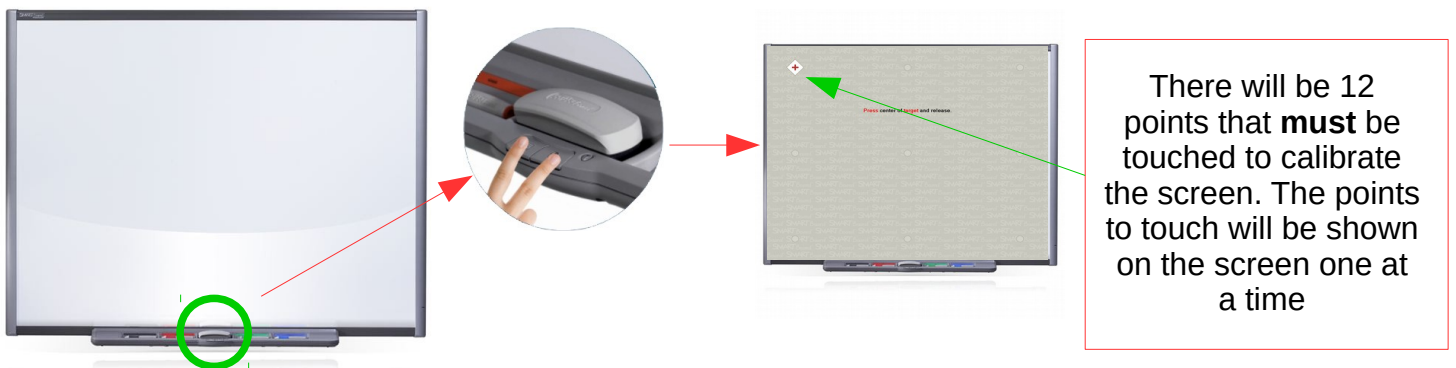


*For Extended Desktop:*



## Calibrate the screens

If you use the pens with the Smartboard you may need to calibrate the screens. You will know this when the line created is not following the pen tip.



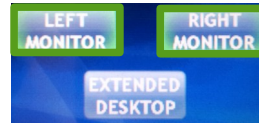
The Smartboards can be configured to work with mirrored or extended desktops.

**Mirrored** – drawing on one board will draw on all boards.

**Extended** – drawing will be independent of other boards.

## Setting up a Mirrored configuration

- 1 Select all the screens on the Crestron display.



Some rooms also have a middle monitor.

- 2 Press the two buttons on the Smartboard screen to access the calibration screen. Follow the instructions on the calibration screen.

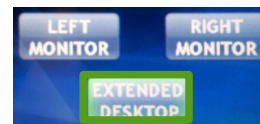


All screens should be showing the calibration screen.

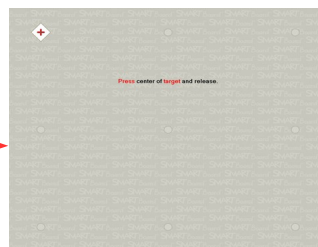
- 3 Repeat for all Smartboard screens.

## Setting up an Extended configuration

- 1 Select Extended Desktop on the Crestron display.



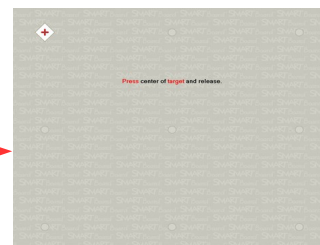
- 2 Press the two buttons on the Smartboard tray to access the calibration tool. The calibration tool with instructions will appear on one screen. To move the tool to another screen press the two buttons twice. Follow the instructions on the calibration tool.



This will move the calibration tool the next Smartboard screen



First screen



Second screen

- 3 Repeat for all Smartboard screens.

- 4 Please change the configuration back to mirror when you have finished. This is the default configuration.